



Key knowledge

- Know where the following countries are on a map (Russia, Germany, USA and Brazil)
- Name and locate counties and cities of the United Kingdom.
- Create maps of small areas with features in the correct place.
- Link features on maps to photos and aerial views.



Key vocabulary

City	A large, built-up area which is larger than a town with a cathedral or university
Country	An area of a country made up of multiple cities, towns and villages
Feature	Anything that could be a location, site, area or region (human or physical recapped from Year 2)

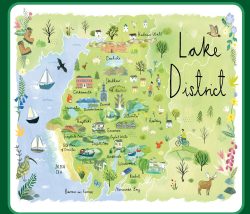
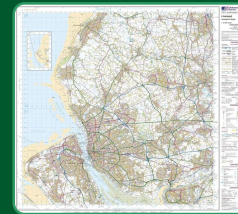
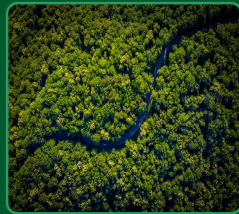
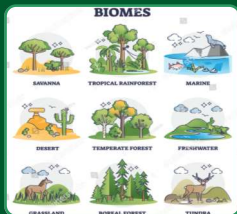
Key questions

- 1 Can you find Russia, Germany, USA and Brazil on a map?
- 2 Which county are we in now?
- 3 Can you name two other countries?
- 4 What is a feature?
- 5 Can you find a feature on a map?
- 6 What could this feature be (looking at a map)?



Key knowledge

- A region of the United Kingdom.
- Know what a biome is.
- Know what a vegetation belt is.
- Know what a climate zone is.
- Label maps with titles to show their purpose.
- Recognise some standard Ordnance Survey symbols.
- Know how to compare their geographical situation with that of others.



Key vocabulary

Region	An area of land that has common features?
Biome	Areas of the planet with a similar climate and landscape, where similar animals and plants live.
Vegetation Belt	An area with distinct plant types, determined by climate, soil, drainage and elevation.
Climate Zone	Areas with distinct weather patterns, which have similar temperatures across the zone.
Ordnance Survey Map	Maps made by Great Britain's national mapping agency
Ordnance Survey Symbols	A list of standard symbols used to mark features on maps.

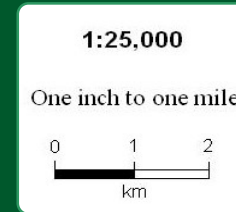
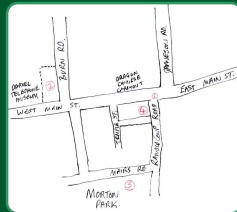
Key questions

- 1 Can you tell me about the features in the Lake District?
- 2 Can you find the lake district on a map?
- 3 What is a biome?
- 4 What is a vegetation belt?
- 5 What is a climate zone?
- 6 What is an Ordnance Survey map?
- 7 What is the Ordnance Survey symbol for a church with a spire?
- 8 How would life differ for someone living in the Lake District?



Key knowledge

- Know that holiday brochures, leaflets and town plans can give us more information about the geographical features of an area.
- Understand what you would use to record or measure the human and physical features from the local area.
- Identify geographical features.
- Identify geographical processes (changes).
- Identify geographical patterns.
- Say what they like / don't like about geographical features.
- Recognise that larger scale maps cover less area.



Key vocabulary

Holiday Brochure	A brochure that tells you geographical information about places you might visit.
Sketch Map	A quick pencil sketch map of a particular place.
Digital Camera	Used to take photographs.
Digital Device	A device that could be used to measure, take photographs or gather information.
Scale	The difference between the size on a map to the size on the ground.

Key questions

- 1 Where would you look if you needed information about where to go on holiday?
- 2 What methods could you use to gather geographical information about a particular area?
- 3 Give an example of a geographical feature.
- 4 Give an example of a geographical process.
- 5 Give an example of a geographical pattern.
- 6 What do you like / not like about Fleetwood?
- 7 Why do we have scales on maps?