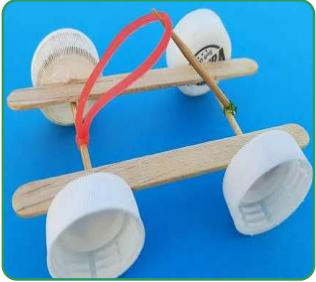


### Key Knowledge



- Try out different axle fixings and their strengths and weaknesses.
- Make vehicles with construction kits which contain free running wheels.
- Use a range of materials to create models with wheels and axles e.g. tubes, dowel, cotton reels.
- Roll paper to create tubes.
- Cut dowel using hacksaw and bench hook.
- Attach wheels to a chassis using an axle.



### Key Questions

- 1 What is an axle?
- 2 Why do we use dowel?
- 3 Why do you use a bench hook when cutting?
- 4 What is the chassis of a vehicle?

### Key Vocabulary

axle	Part that holds two wheels together.
dowel	Wooden pole used to make an axle.
hacksaw	Saw used to cut wood to the right length.
bench hook	Used to protect the bench and fingers when cutting.
chassis	The main body of the vehicle.
design	Planning a project beforehand.
make	Building a designed project.

Axle



Dowel



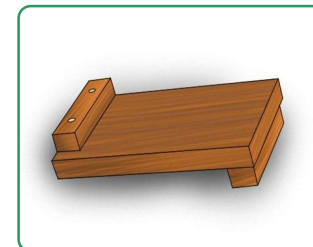
Hacksaw



Chassis



Bench Hook



Design





### Key Knowledge



- Explore how to make structures stronger.
- Investigate different techniques for stiffening a variety of materials.
- Test different methods of enabling structures to remain stable.
- Join appropriately for different materials and situations e.g. glue, tape.
- Mark out materials to be cut using a template.
- Use a glue gun with close supervision.



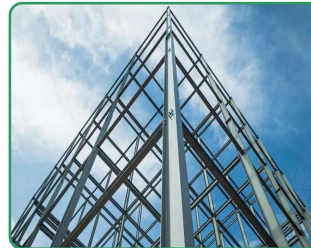
### Key Vocabulary

structure	A building.
material	What the model is made from.
stable	Does not fall over.
glue gun	Used to melt hot glue onto models.
tape	Used to join.
template	Used to produce lots of the same sized pieces.
stiffening	Making something stronger.

### Key Questions

- 1 What does stable mean?
- 2 What would you use a template for?
- 3 How would you stiffen or strengthen part of a model lighthouse?
- 4 How do you use a hot glue gun safely?

Structure



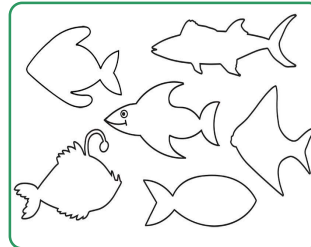
Material



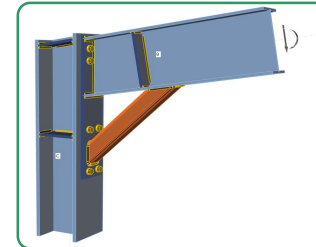
Glue Gun



Template



Stiffening



Stable





### Key Knowledge



- Develop a food vocabulary using taste, smell, texture and feel.
- Group familiar food products. e.g. fruit and vegetables.
- Cut, peel, grate, chop a range of ingredients.
- Work safely and hygienically.

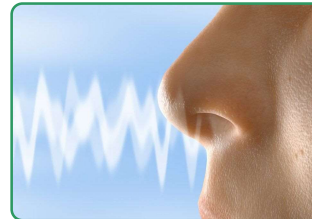
### Key Vocabulary

smell	What does it smell of?
texture	What does its surface feel like?
fruit	Contains seed and can be eaten as food
vegetable	Plant or part of a plant used as food
cut	Use a knife to make pieces.
peel	Taking the skin of the fruit / vegetable off.
grate	Make the food into small shreds.
chop	The movement made by a knife.

### Key Questions

- 1 What is the difference between a fruit and a vegetable?
- 2 How can you cut food safely?
- 3 What is texture?
- 4 What should you always do before cooking and eating?

Smell



Texture



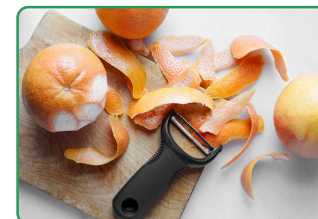
Fruit



Vegetable



Peel



Grate

